

Student Satisfaction Survey

Key Indicator - 2.7.1

Under Criterion II of Teaching – Learning and Evaluation

(Includes the questionnaire suggested by National Assessment and Accreditation Council (NAAC))

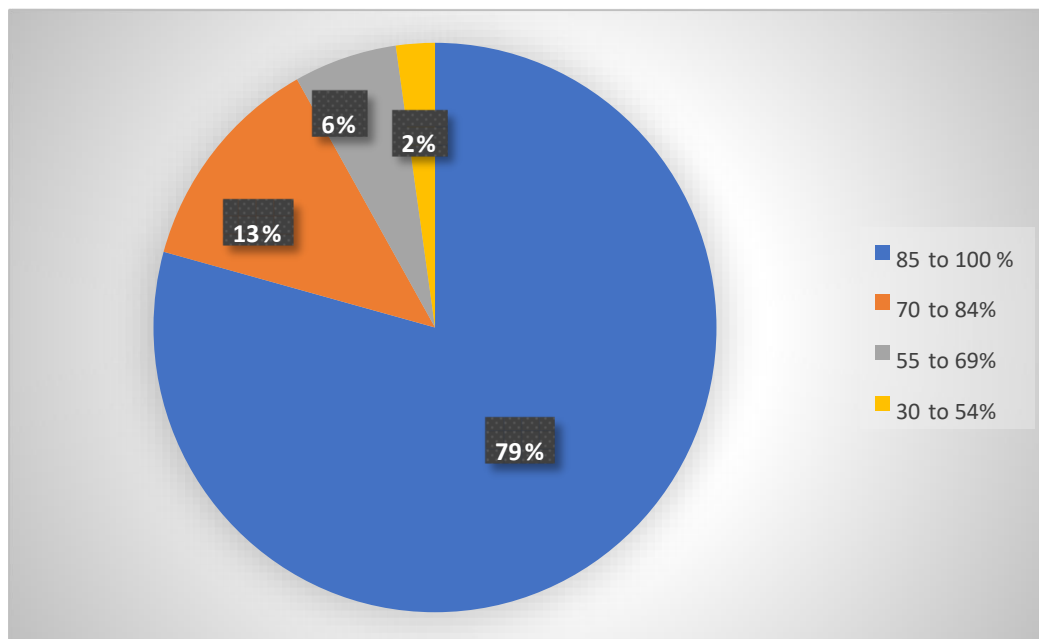
Report on results and details of Students Satisfaction Survey (SSS):

S.S.M.M College of Arts, Commerce and Science is an eminent and prestigious college situated in Pachora, Dist.-Jalgaon (M.S). The college body believes in continuous evaluation through various ways and improving the overall functioning of college. Students Satisfaction Survey (SSS) is one among these. **This survey includes majorly the questionnaire recommended by NAAC and was carried out on 135 students from different faculties out of the 1369 students admitted during the academic year 2021-22.** The organization of survey, questionnaire and the results are provided as follows.

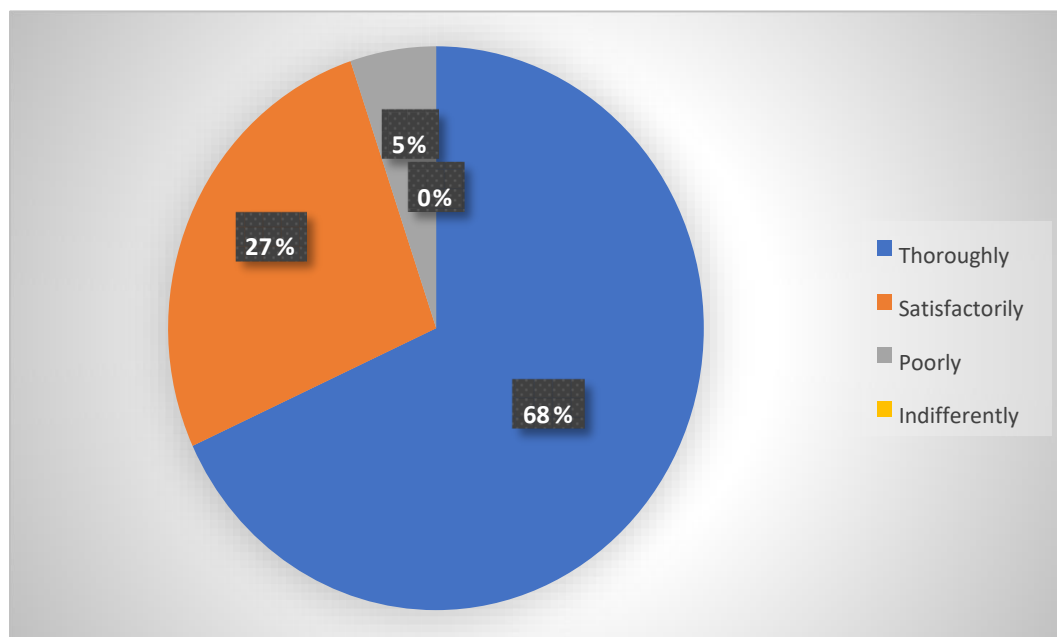
The Higher Education sector is highly competitive. To impart quality technical education and provide competent resources to the society, stakeholder's inputs create a cutting edge in achieving this. Our institute strives to reach high altitudes with continuous inputs especially from the students. NAAC (National Assessment and accreditation council) is conducting a Student Satisfaction Survey regarding Teaching – Learning and Evaluation, which will help to upgrade the quality in higher education. A student will have to respond to all the questions given in the following format with her/his sincere effort and thought. Her/his identity will not be revealed. This survey is being conducted by S.S.M.M College of Arts, Commerce and Science and its motto is to upgrade the quality in higher education. A student will have to respond to all the questions given in the following format with her/his sincere effort and thought. Her/his identity will not be revealed.

- The responses given by the students for the questionnaire provided to the students are given below.

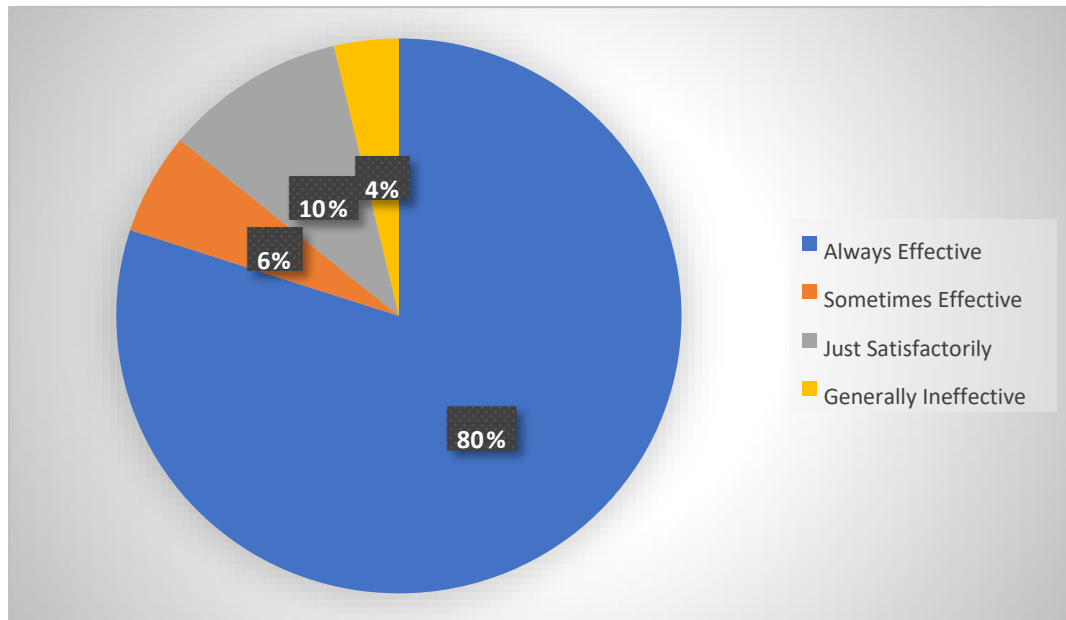
1. How much of the syllabus was covered in the class?



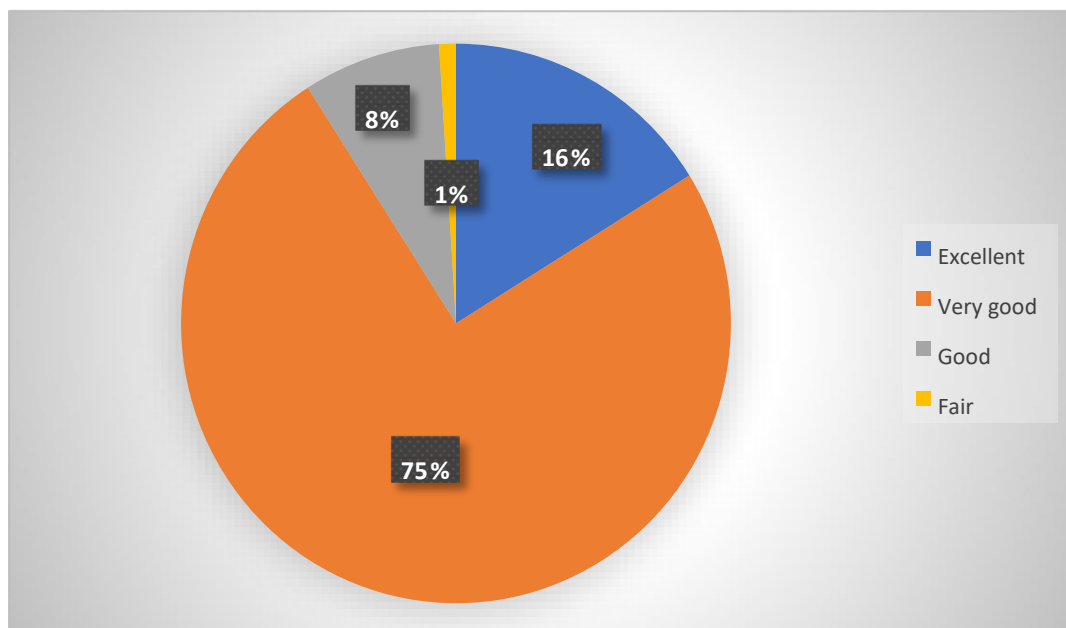
2. How well did the teachers prepare for the classes?



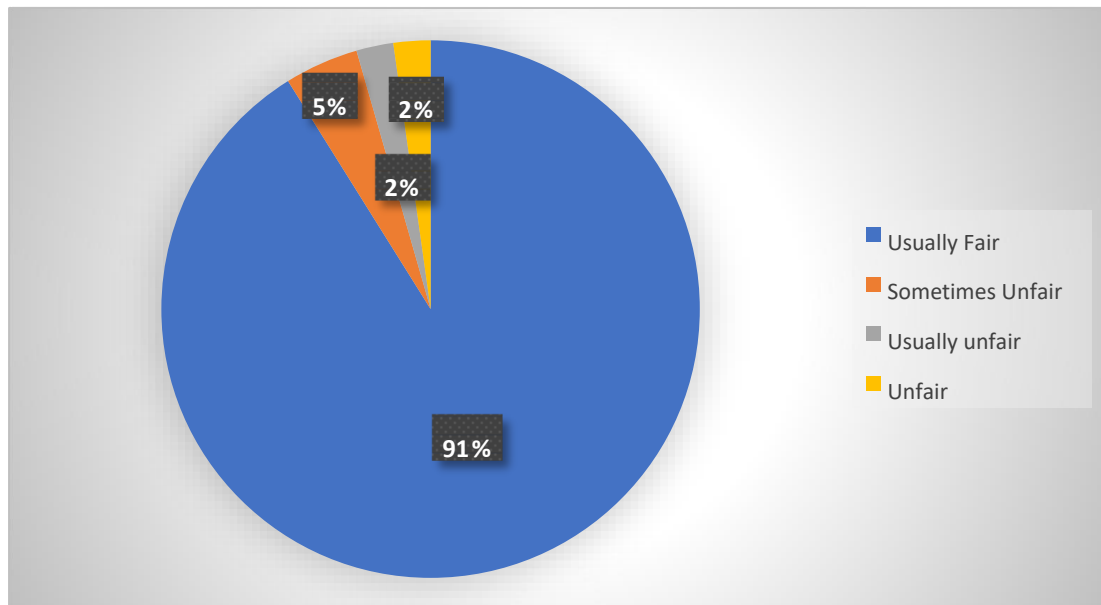
3. How well were the teachers able to communicate?



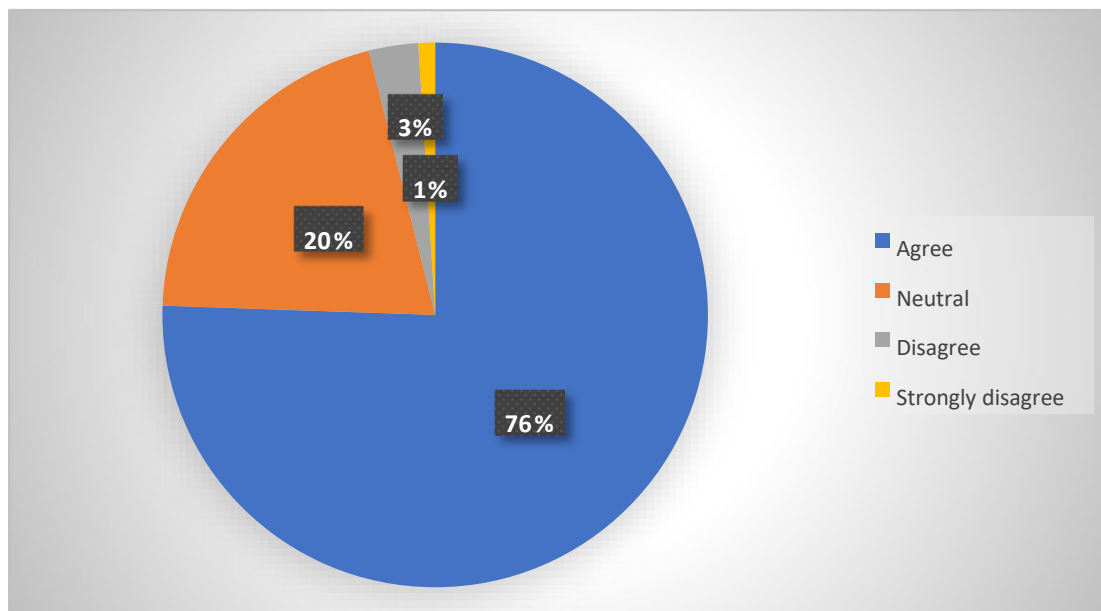
4. The teacher's approach to teaching can best be described as



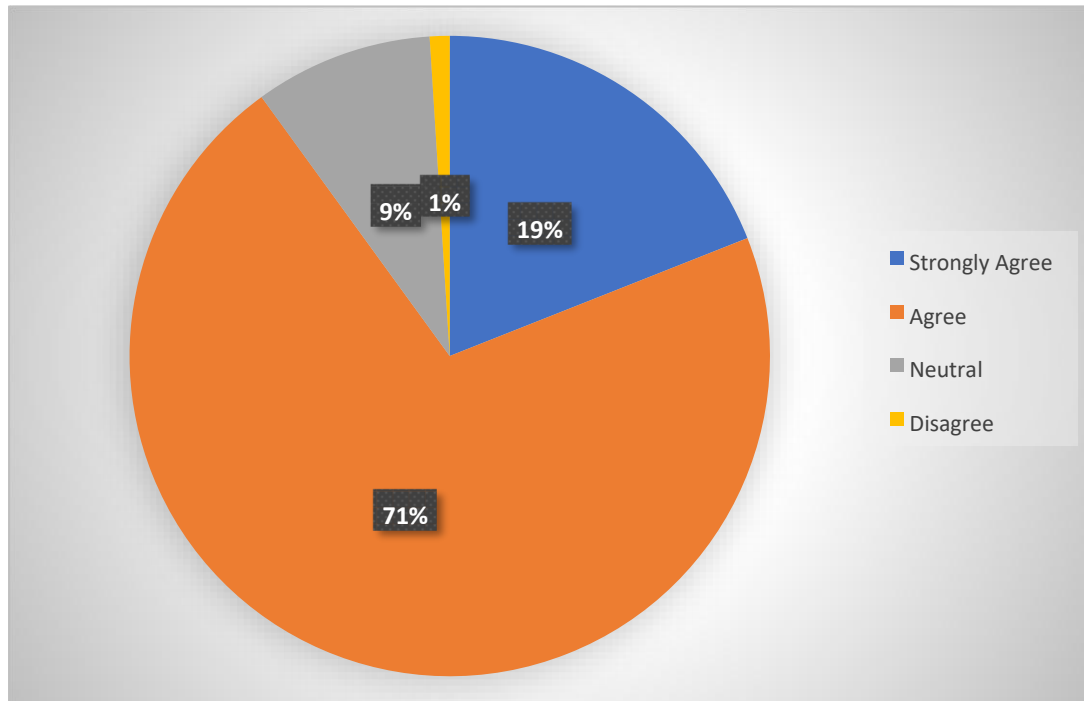
5. Fairness of the internal evaluation process by the teachers.



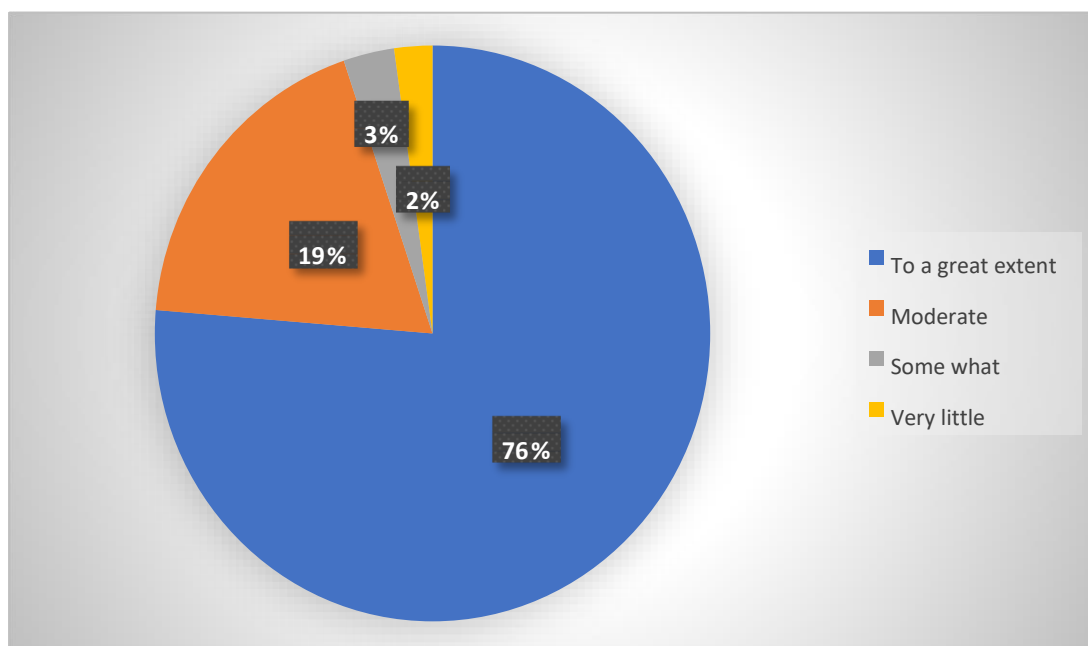
6. The institution provides multiple opportunities to learn and grow.



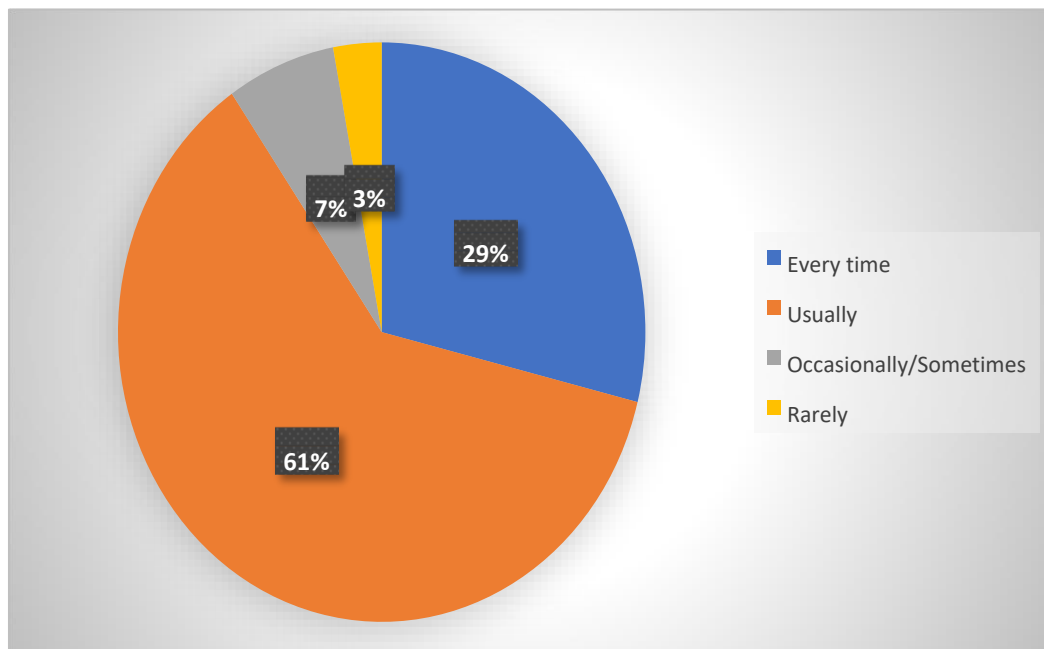
7. The institution makes efforts to engage students in the monitoring, review and continuous Quality improvement of the teaching learning process.



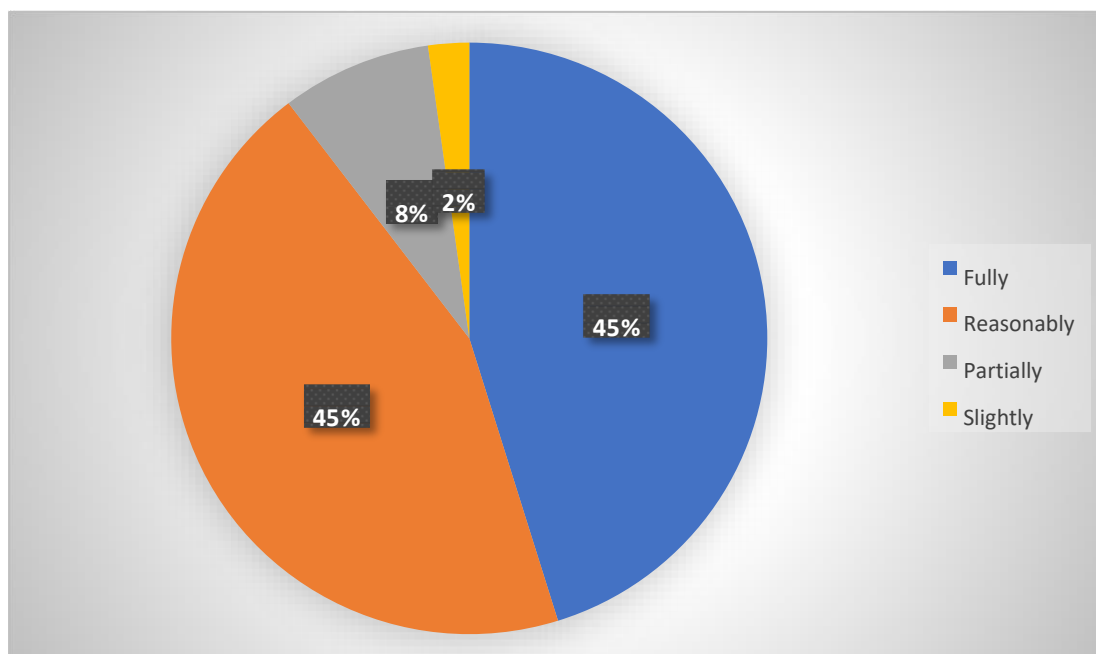
8. How well did the teachers prepare for the classes?



9. The teachers illustrate the concepts through examples and applications.



10. The teachers identify your strengths and encourage you with providing right level of challenges.



Regarding the coverage of syllabus, more than 90% of students satisfied with the coverage of more than 71 percent syllabus. 95% of Students were satisfied with the preparedness of Teachers. More the 85% of students admitted that the Teachers possessed effective communication skills. 91% of the students strongly agree towards the approach of teaching. The evaluation process is well applauded by 91% of the students. More than 75% of the students agreed that the institution provides multiple opportunities to learn and grow. Regarding the efforts made by the institution, 90% of students agree the effort put by the institute to improve the quality of teaching and learning process. More than 75% of the students agree to a great extent that Teachers prepare well for the classes. Nearly 90% of the students agreed that the teachers illustrate the concepts through examples and applications most of the times. Most of the students agree with the statement that the quality of teaching-learning process in the institute is very good.

Analysis of outcomes of Students Satisfaction Survey (SSS)

QUESTION NO.	OPTION 4(%)	OPTION 3(%)	OPTION 2(%)	OPTION 1(%)	TOTAL(%)
1	79	13	06	02	100
2	68	27	05	0	100
3	80	06	10	04	100
4	16	75	08	01	100
5	91	05	02	02	100
6	76	20	03	01	100
7	19	71	09	01	100
8	76	19	03	02	100
9	29	61	07	03	100
10	45	45	08	02	100